



## THE DESIGN POSSIBILITIES ARE ENDLESS

with N-FINITY Tiles,  
a new and **UNIQUE**  
**CONCEPT** of repeat  
**PATTERNS**

Villa Lagoon Tile offers our N-Finity Tiles, a large collection of handmade encaustic cement tiles from designer Stu Neyland of Neyland Design. These designs offer patterning of the utmost flexibility and versatility, with tiles that can be arranged in **any direction** to create **random** or **traditional** repeat patterns.

The N-Finity Collection, originally featured 12 unique patterns, and has now expanded to over 60. From geometric to ethnic, all designed to achieve aesthetic balance no matter how you place them, which makes each installation a **unique work of art**.



Want to play with this  
in our **DESIGN TOOL**?

Click the tile name:

See more Neyland Design Tiles and experience  
the magic of N-Finity patterns at your fingertips.

Try the **Villa Lagoon Tile DESIGN TOOL**: <https://www2.villalagoontile.com/tile-design-tool/>

Once there, "Filter by Designer Series, Neyland Design" ... and let the creating begin!

### The magic of N-Finity tiles

These sample patterns are just a few of the "N-Finite" patterns made with one tile design.

1. Choose any Neyland **Design**
2. Choose your **Colors**, 102 options, and add terrazzo to any or all colors if you'd like.
3. **Order** and **Install** with unlimited pattern options!

We're here to help - call us with any questions or suggestions.

Visit our [web site](#) to see the full collection.





# THE N-FINITY DESIGN CONCEPT

Square design motifs that match up no matter how you place them!



DECORAMA



CEMENT TILE:  
**DECORAMA**  
GREAT FOR HIGH TRAFFIC AREAS

CONCEPT IMAGE

© 2010-2022 Neyland Design

# SO MANY OPTIONS

The Neyland Design collection has over 60 designs to-date, and we're adding more all the time.

Most are 8" Square, we do also offer Hex tiles.



PARADIGM





## SUSTAINABLE.

Cement tiles are handmade, with a mechanical high pressure process, not a high heat process.

All mineral-based material, with low energy requirements to produce.



PROPS



CEMENT TILE:  
**PROPS**  
HEADBOARDS AT THE  
KIMPTON ROWAN  
PALM SPRINGS HOTEL

© 2010-2022 Neyland Design

## DURABLE.

Produced with colors 2-5 mm thick, scratches are not an issue.

Cement tiles installed in public spaces over a century ago still hold their colors and their pattern clarity.

With the correct installation and sealants, cement tiles are great for floors and walls, in high traffic areas for commercial and residential, indoors and outdoors.\*

See more of the Neyland Design Tile Collection and experience the amazing patterns developed by YOU to suit your own creative style!

Cement tiles installed in public spaces over a century ago still hold their colors and their pattern clarity.

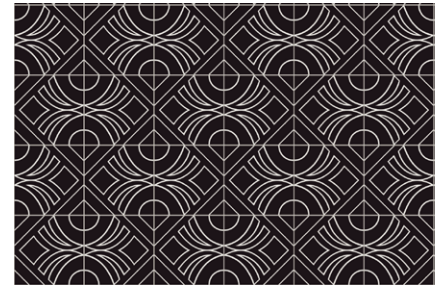


OPTIMA



\* When installed outdoors in areas that freeze, 1/8" grout and water proof sealants are required.





COSI FAN TUTTE



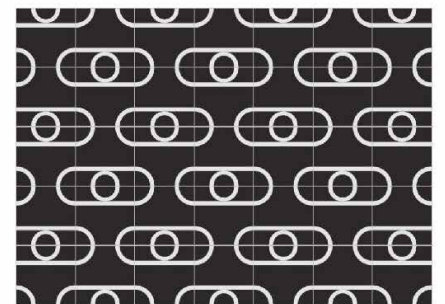
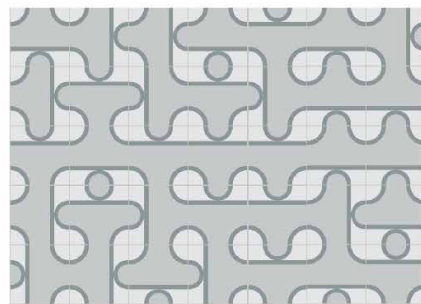
CEMENT TILE:  
**COSI FAN TUTTE**  
INDOOR AND OUTDOOR INSTALLATIONS



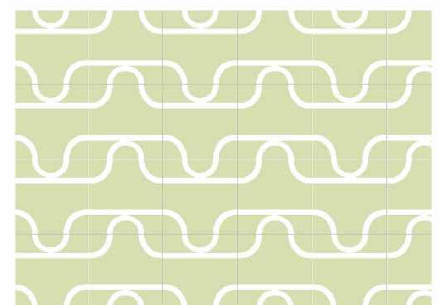
© 2010-2022 Neyland Design

### OTHER FACTS.

With color 2-5 mm thick, scratches are not an issue. Cement tiles have been used in public places over 100 years ago and they still look new. With the correct installation and sealants, cement tiles are great for high traffic areas; commercial, residential, indoor and outdoors, floors and walls.



FULCRUM



FULCRUM is the tile used on the cover image.

# CEMENT TILE DESIGN TOOL – GIVE IT A GO.

See more of the Neyland Design Tile Collection and experience the amazing patterns developed by YOU to suit your own creative style!



Experience the magic of N-Finity designs at your fingertips: <https://www2.villalagoontile.com/tile-design-tool/>  
View our “How to use the Design Tool” video tutorial on the DESIGN TOOL website.

To make sure you’re creating with Neyland Design N-Finity tiles, “Filter by Designer Series, Neyland Design” ... and let the creating begin!



Top Tab:

**PICK A PATTERN.** Click on the tile and it will be added to the pattern bar on the left.

Click on the tile in the left side bar, and you are taken to the **DESIGN TOOL to select your colors.**

Select a color, then click on the area of the design where you want to use that color. Do this until you have filled the entire design.

Go back and edit the colors at anytime during the session. It will update your layout. Add a new tile for each color variation you want to use.

Select **LAYOUT TOOL and select floor option**, a grid will be created. From here you can click on the empty grid squares and your tiles are added. You can then use the tools just above the grid to rotate or clear a tile.

MAKE SURE YOU download your PDF, upper right side of your screen. At this time you cannot log back into a design session.

A PDF with all the tile information and colors will be emailed to you.



To discuss your project or order samples,

call: 1(251) 968-3375

or e-mail [info@VillaLagoonTile.com](mailto:info@VillaLagoonTile.com)

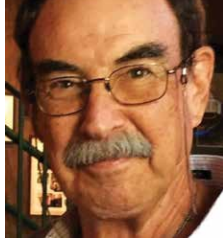
## MORE ABOUT the DESIGNER, STU NEYLAND

and the MANUFACTURER, VILLA LAGOON TILE

We're here to help. If you have any questions, please reach out!

### ABOUT THE ARTIST: STU NEYLAND

Stu Neyland is inspired by the natural beauty around him on the island he calls home off the west coast of Florida. Always enamored with play of



negative and positive shapes, especially in nature; those are the inspirations you will see reflected in the designs as he brings art into homes, businesses and outdoor living spaces.

Stu will be happy to design custom one-of-a-kind tiles for any installation. All designs will be produced and shipped by Villa Lagoon Tile. All of the designs you see here, as well as hundreds more, are available for other textile surface products from fabric to wallpaper.

To see more of our textile designs, visit [n-finitydesigns.com](http://n-finitydesigns.com). Or for specific Neyland Design questions, email [contact@neylanddesign.com](mailto:contact@neylanddesign.com)

### ABOUT THE MANUFACTURER: VILLA LAGOON TILE



Based in Gulf Shores, AL, Villa Lagoon Tile specializes in custom designed cement tiles. With distribution to clients across the US, as well as Canada, Europe, and Australia, Villa Lagoon helps to spread the word about this durable, versatile, and fashion-forward hard surface. With a pallet of 102 colors and a vast selection of styles, from gorgeous Art Nouveau reproductions to traditional Victorian motifs, Zellige, and Breeze Blocks, the company's portfolio is one of the best.

To discuss your project or order samples,  
call: 1 (251) 968-3375 or e-mail [info@VillaLagoonTile.com](mailto:info@VillaLagoonTile.com)

HAVE FUN EXPLORING THE NEYLAND DESIGN POSSIBILITIES.  
LET YOUR CREATIVITY RUN WILD!